

ARROWHEAD FIRE PROTECTION DISTRICT DESCRIPTION

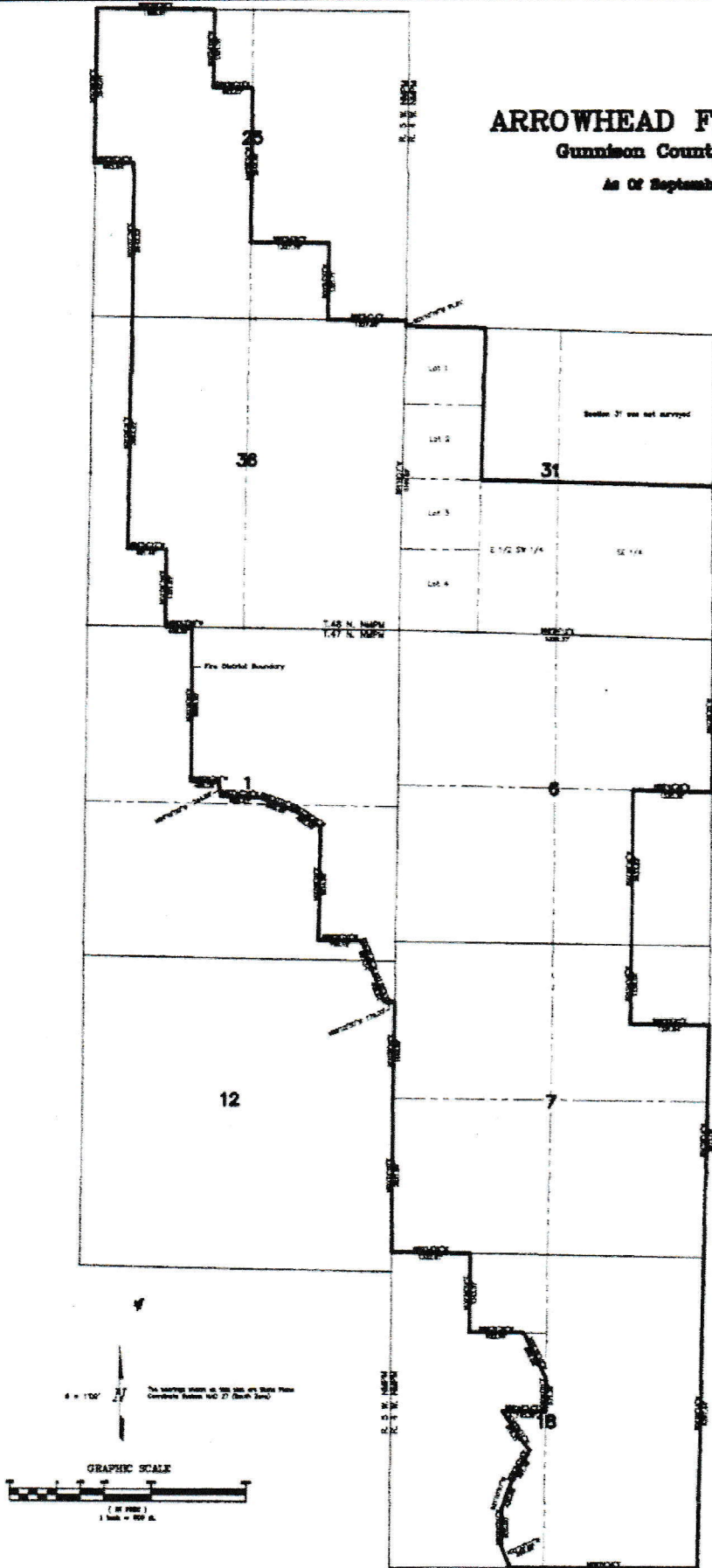
Beginning at the Northwest corner of Section 25, Township 48 North, Range 5 West, NMPM; thence S 88°56'39" E 1985.91 feet along the North line of Section 25; thence S 0°54'06" W 1321.35 feet; thence S 88°56'03" E 662.07 feet; thence S 0°55'51" W 2642.95 feet; thence S 88°54'51" E 1327.79 feet; thence S 0°53'50" W 1321.71 feet; thence S 88°54'14" E 1327.60 feet to the Southeast corner of said Section 25; thence S 1°10'19" W 91.91 feet to the Northwest corner of Section 31 of Township 48 North, Range 4 West, NMPM; thence S 1°18'17" W 5191.62 feet to the Southwest corner of Section 31; thence S 88°24'12" E 5324.37 feet to the Southeast corner of Section 31, said point is also the Northeast corner of Section 6, Township 47 North, Range 4 West, NMPM; thence S 0°25'25" W 2630.01 feet to the East ¼ corner of Section 6; thence N 88°46'38" W 1330.38 feet; thence S 0°26'16" W 2633.83 feet; thence S 1°04'06" W 1328.02 feet; thence S 89°22'52" E 1331.64 feet; thence S 1°02'18" W 3973.09 feet to the Northeast corner of Section 18; thence S 1°02'18" W 5297.44 feet to the Southeast corner of Section 18; thence S 89°51'16" W 3176.17 feet along the South line of Section 18; thence N 21°33'02" W 386.56 feet; thence N 0°00'00" E 655.00 feet; thence N 21°05'07" E 430.85 feet; thence N 28°44'06" E 661.46 feet; thence N 34°59'11" W 819.21 feet; thence S 89°48'24" E 740.36 feet; thence N 0°40'51" E 571.39 feet thence N 26°29'10" W 859.08 feet; thence N 89°31'35" W 922.96 feet; thence N 0°29'52" E 1343.51 feet; thence N 89°14'51" W 1332.67 feet to the Southwest corner of Section 7, Township 47 North Range 4 West, NMPM; thence N 0°12'20" E 2621.86 feet; thence N 0°59'10" E 1648.89 feet; thence N 89°02'30" W 179.30 feet; thence N 21°55'53" W 409.64 feet; thence N 19°25'37" W 697.24 feet; thence N 88°51'00" W 726.12 feet; thence N 0°49'00" E 1934.96 feet; thence N 57°39'29" W 495.58 feet; thence N 69°10'02" W 649.48 feet; thence N 87°40'25" W 665.53 feet; thence N 9°16'20" W 244.86 feet; thence N 88°51'00" W 459.09 feet; thence N 0°15'50" E 2659.20 feet to the South line of Section 36, Township 48 North, Range 5 West, NMPM; thence along said South line N 88°53'58" W 458.69 feet; thence N 1°06'38" E 1321.62 feet; thence N 88°54'27" W 661.46 feet; thence N 1°04'31" E 3964.22 feet; thence N 0°57'36" E 2642.23 feet; thence N 88°55'26" W 662.94 feet; thence N 0°58'51" E 2642.01 feet to the point of Beginning.

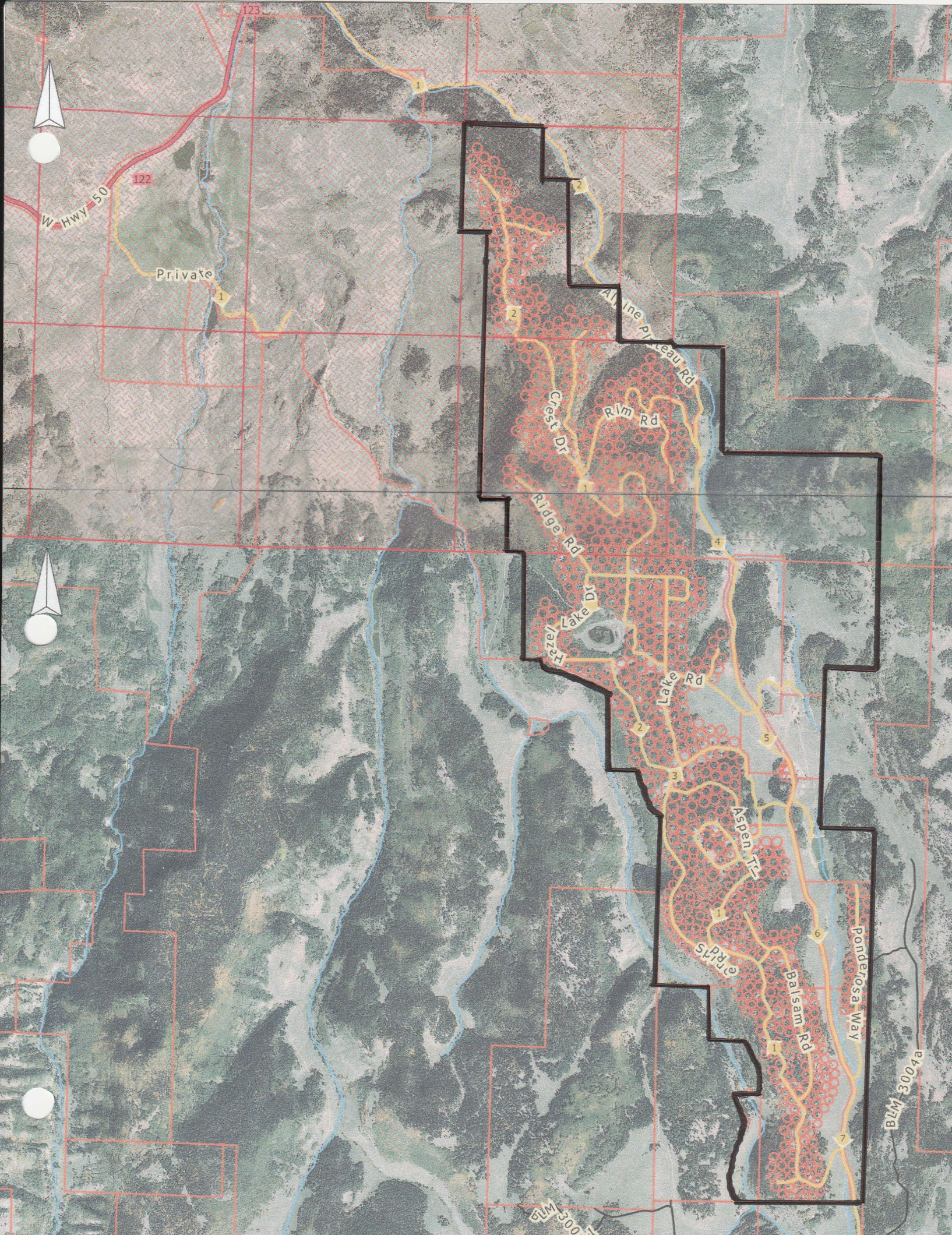
Also the SE 1/4, the E 1/4 SW 1/4, and BLM Lots 1, 2, 3 & 4 of Section 31 Township 48 North, Range 4 West, NMPM.

ARROWHEAD FIRE DISTRICT

Gunnison County Colorado

As Of September 2007





W Hwy 50
122

Private

Alpine Plateau Rd

Crest Dr

Rim Rd

Ridge Rd

Lake Dr
Hazelnut Lake Dr

Lake Rd

Aspen Tr

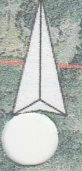
Spruce Tr

Balsam Rd

Ponderosa Way

BLM 3004a

BLM 3004b



123

1

2

2

4

2

3

5

6

7